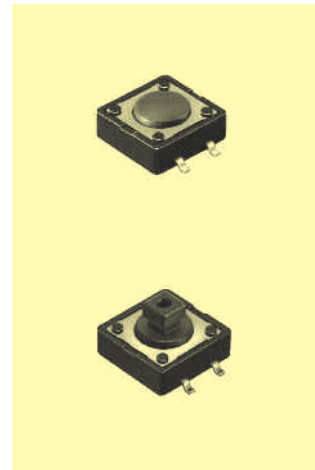
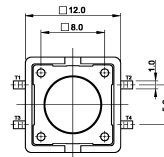
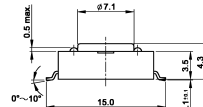
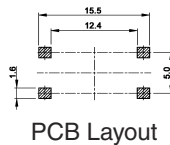


Specifications:

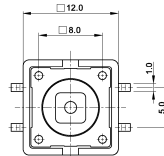
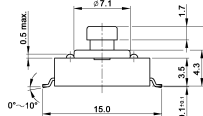
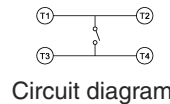
Contact rating:	12 V DC, 50 mA
Contact resistance:	< 100 mΩ
Insulation resistance:	> 100 MΩ at 500 V DC
Dielectric strength:	250 V, 50 Hz for the duration of 1 minute
Operating temperature:	-25 °C to +70 °C
Electrical life:	2.6 N: minimum 100 000 cycles 1.6 N: minimum 200 000 cycles
Operating force:	see ordering code
Contacts:	phosphor bronze, silver-plated
Terminals:	brass, silver-plated
Material:	cover: stainless steel base and stem: high-temp. nylon meets UL 94 V-0; caps ABS
Mounting:	on pc-board – SMD
Soldering conditions:	hand-soldering – max.: 30 W, 2 sec, 320 °C
Packing:	on tapes – see ordering code
Travel:	0.35 mm ± 0.1 mm

Models:

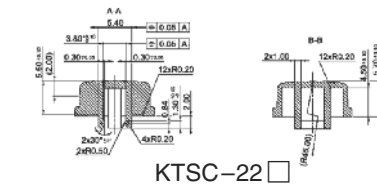
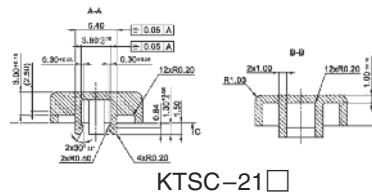
TSS 21 □



TSS 24 □



Caps for TSS 24 □



Ordering code:

Switches

TSS 2 □ □

Dimension H/Packing:

- 1 4.3 mm / 700 pcs/reel
- 4 7.3 mm / 500 pcs/reel

Colour of stem for operating force:

- N 1.6 N, brown
- R 2.6 N, red

Caps KTSC-2 □ □

Cap type:

- 1 square
- 2 round

Cap colour:

- Y yellow
- B blue
- R red
- I ivory
- K black
- G green